

# Society Sketchbook

January, 2026

Issue 58

## DATES FOR YOUR DIARY

### SHARON HURST

**Demo: Snow Queen  
Portrait in Watercolour**  
**Friday 23rd January,**  
**2.30pm** at Bishop's Sutton  
Village Hall

### SHARON HURST

**Workshop: Snow Queen  
Portrait in Watercolour**  
**Saturday 7th February**  
10-4 Christy Hall,  
Old Alresford  
[see page 3](#)

### CHRISTINE FORBES

**Demo: Flowers & foliage  
based on East Asian  
painting and philosophy  
in watercolour & inks**  
**Friday 27th February**  
**2.30pm** at Bishop's Sutton

### CHRISTINE FORBES

**Workshop: Flowers &  
foliage based on East  
Asian painting and philos-  
ophy, watercolour & inks**  
**Saturday 14th March**  
10-4, Christy Hall,  
Old Alresford

### RACHAEL ALEXANDER

**Demo: Cow parsley and  
dandelion clocks in  
mixed media**  
**Thursday 26th March**  
7.30pm at Bishop's Sutton

### AGM & SPEAKER

**ANNE ANDERSON**  
**Monet - 100 years**  
**Thursday 23rd April**  
7.30pm at Bishop's Sutton

## PLANNING FOR A NEW YEAR

*A very Happy New Year to  
you all and we hope that you  
survived the festive season  
with nothing more than a  
few extra pounds to work off!*

Going forward seems to be the  
irritating phrase of the moment  
but that's what your committee  
strives to do to keep you all  
stimulated and coming back  
for more.

Sue Cox, our Programme  
Secretary, is currently working  
on the next programme, which  
runs from September 2026 to  
June 2027. We have to book  
good demonstrators and  
speakers 18 months to two  
years ahead, juggling dates  
and guests to make sure that  
we spread the subject matter,  
so that whatever your 'thing' is,  
we hope to cater for it at least  
once in a programme.

The good news is that **Jamel  
Akib** will be back for a land-  
scape demo and a workshop,  
and **Mark Warner** will be  
demonstrating one of his won-  
derful acrylic seascapes, below.

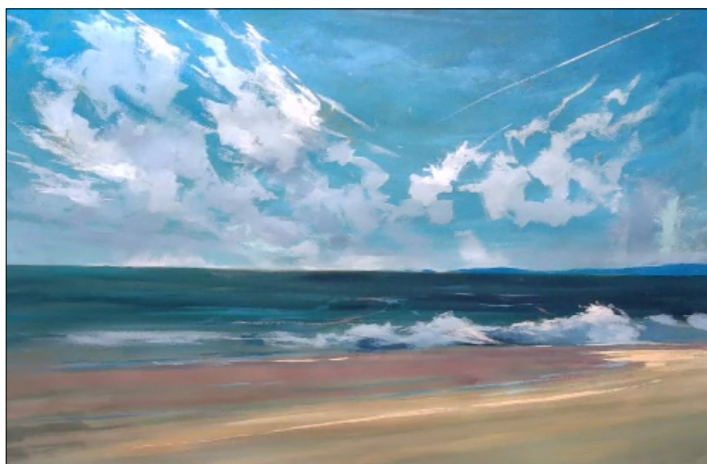


Kim Page, Honfleur in watercolour

While **Kim Page** will return  
with his impressionistic  
watercolours, see above.

Venues booked for **painting  
days** include Chawton House  
and **speakers** include Scott  
Anderson on Art Deco Painting  
and Gabriel Channan on *How  
did art get realistic?*

**We're always on the look  
out for new demonstrators,  
so please do email Sue at  
suealex13@gmail.com or  
call her on 01962 732043  
with your suggestions.**



## ARE YOU INTERESTED IN A PASTEL WORKSHOP?

*After the popularity of  
the last pastel workshop,  
new member, Sheila Corby  
Dale, has suggested that  
another pastel workshop  
would be a good idea this  
winter, but without a tutor  
in order to bring costs  
down.*

Anyone interested should  
contact Sheila who will  
co-ordinate details once she  
has an idea of the number of  
people who are interested  
enough to make it a definite  
arrangement.

*If you think this is a good idea  
please contact Sheila asap  
on 07814 364305 or email  
sheilajcorby@hotmail.co.uk,  
for more information.*

## MEET THE COMMITTEE

### ***In this edition we focus on Bethan Butler.***

Born and raised in Aberystwyth, in a Welsh-speaking household, Beth not surprisingly was very musical, and played in the Mid Wales Youth Orchestra and sang in choirs and performed at Eisteddfods.

After studying French and English in London, Beth spent a year teaching at a lycee in Marseille, followed by two years travelling around the USA, gaining valuable life experience. She used those lessons to get into social work, initially as an Education Welfare Officer, then did a part-time MA in Social Studies at the University of Kent. After some years' practice, she moved to a senior post in the London Borough of Barnet.

Beth lived for many years in north London, married, and had her first child there, then moving to Lewes, Sussex, where she had her second daughter. She moved to Alresford in 1988 and was appointed as a Group Organiser in Adult Basic Education (literacy) for Winchester and Alresford, then taught Social Work at BCOT. She later worked at Alton College, mainly training Care Home Managers and Treloars Staff, finally obtaining a post in the CQC Inspectorate.



Beth has belonged to various Art Societies and enjoyed painting in watercolour. "I'm now 'resting' and enjoy spending time admiring the great works of art history in exhibitions both locally and in London," says Beth. "I've always been keen on architecture, and I belong to a lively, inquisitive U3A Group and enjoy cooking, particularly French dishes." Beth also loves being a grandparent, with five grandsons aged from three to nine years old.

### ***Welcome to new members***

*Denise Carpenter, Rob Heathcock, Isobel Cliff,  
Patricia Cliff, Jean Godfrey, Vanita Hilton,  
Diana Harvey and Andrea Harris.*

## OBE FOR TOM YENDELL

***Alton-based mouth and foot painting artist Tom Yendell, has been awarded the OBE for his outstanding contribution to helping young people with disabilities. Born without arms due to Thalidomide, he was invested in Windsor by HRH The Princess Royal.***



Tom, has been a member of the Mouth & Foot Painting Artists (MFPA) for almost 40 years. He is admired for his bold, vibrant artwork and his lifelong dedication to inclusion, education, and creativity.

## COLLAGE WORKSHOP

***There are a few places left for a paper collage workshop with Kirsty McNay on Saturday 25th April 2026 in the Christy Hall, Old Alresford.***

There are two options to choose from, 10am-12.30pm or 1.30pm-4pm and places cost £18.

*Please reserve your place if you have not already done so with Sue Cox on suealex13@gmail.com, indicating which time you prefer.*

## PRIZE WINNERS

At our September meeting, trophies were presented to some of the members who had won prizes at the annual exhibition. Here are Joanne May, Best Watercolour (left), with Vice President Juliet Bonham Carter and Jenny Kennish, Best Acrylic.





## AUTUMN MEETINGS

*It was beginning to smell a lot like Christmas when warming mulled wine and mince pies were served at our last meeting of 2025, duly helped by Nigel Halliday's fascinating talk on Christmas in Art.*

**Jamel Akib** was our September demonstrator and as usual he gave a bravura performance, dashing off multiple stunning paintings in the course of the evening. You'll be pleased to hear that we have booked him already for next year for another demo and follow-up workshop.



In October we enjoyed an animal study in pastel and gouache with **Alison Board** and in November, a



combined demo/workshop day with **Roger Dellar** on interiors, which was hugely successful. We are looking at trying to include this kind of day again in the future.

## SUBS INCREASE

**Just a reminder that your subs are due on the 1st April and, that after many years at the same price, they have been increased from £15 to £18.**

If you would like to set up a standing order you will find a form on our website on the JOIN US page or you can pick up a form at any members meeting.

Should you already have a standing order, please can you make sure that it is paid to us **on or before the 1st April** and that it is for the **new amount**. Thank you.

All queries to Veronica Bliss on 01962 713382 or email [veronicabliss9@gmail.com](mailto:veronicabliss9@gmail.com).

## CLASSES NEWS

*As a new term starts, we are delighted to be continuing with the following painting classes:*

- **Oils** with Rachael Alexander on a Tuesday afternoon at The Colour Factory in Winchester.
- **Watercolour** with Christopher Cole on a Thursday morning at The Christy Hall in Old Alresford.
- **Watercolour for Beginners/Improvers** with Sharon Hurst on a Thursday afternoon in Old Alresford, and,
- **Watercolour** with Sharon on a Friday morning.

We are also hoping to continue with our untutored portrait classes on a Wednesday in Old Alresford, provided we can find sitters! So....would YOU like to sit for us? It's a wonderful, relaxing and fascinating experience and you may even be able to take home a portrait. Acrylic painters are always welcome to attend oil classes.

**For more information; to volunteer as a sitter, or to book a place, please contact Nikki Flannigan at [nikkicartwright@btinternet.com](mailto:nikkicartwright@btinternet.com)**

## BOOK YOUR WORKSHOP NOW

### STEP ONE

**Contact Sue Cox to check availability on the workshop by email [suealex13@gmail.com](mailto:suealex13@gmail.com) or call her on 01962 732043.**

### STEP TWO

**If there are still places available then pay £40 by BACS to Lloyds Bank, Sort Code, 30-64-72, Business Account No. 31331268 with the artist's name as reference. Please send confirmation of any BACS payments to Sue Cox as above.**

**If paying by cheque please send a separate cheque for £40 for each workshop and *put the workshop name on the back of each cheque* to Sue Cox, The Hyde, Basingstoke Road, Old Alresford SO24 9DH.**

*Bookings are taken on a first-come first-served basis and your place is not guaranteed until a cheque or a BACS payment has been received.*

## WORKSHOP PROGRAMME

### SHARON HURST

**Snow Queen in watercolour**

Saturday 7th February

10-4, Christy Hall, Old Alresford

### CHRISTINE FORBES

**East Asian Flowers & Foliage in watercolours & inks**

Saturday 14th March

10-4, Christy Hall, Old Alresford

**Any queries email [suealex13@gmail.com](mailto:suealex13@gmail.com) or call her on 01962 732043.**

## JANUARY DEMO

**Sharon Hurst, will demonstrate a Snow Queen portrait in watercolour at 2.30pm on Friday 23rd January.**

Sharon is a popular TV artist and demonstrates art materials on the Create & Craft shopping channel. She has also featured in an episode of *Fraser and Friends* as well as numerous appearances in *A Splash of Paint*. She has illustrated the covers of several books, has two teaching DVDs and a book on *How To Draw Unicorns*.



*The Changeling*

Sharon travels the country visiting art groups; judging art exhibitions, opening public events, running workshops in her Hampshire home and is a much-loved tutor for this Society, teaching two classes a week in Old Alresford.

**Sharon will hold a follow up workshop on Saturday 7th February from 10-4 in Old Alresford - see page 3.**

## MARCH MEETING

**Known to those of you who have attended classes at The Colour Factory, Rachael Alexander will be tackling Cow Parsley and Dandelion Clocks at our meeting on Thursday 26th March at 7.30pm.**

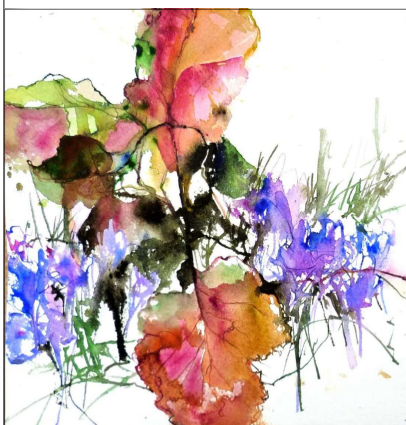
Rachael is a painter and muralist who graduated from Winchester School of Art with a degree in printmaking. She has gone on to work in many different formats from small scale paintings to murals that span entire rooms.

She specialises in trompe l'oeil and works in all paint mediums. Her work has been hung in Hotel du Vin and across the Royal Caribbean ships, and projects that she has collaborated on have reached across the globe.



## FEBRUARY MEETING

**A new demonstrator to us is Christine Forbes who, on Friday 27th February at 2.30pm, will demonstrate Flowers and Foliage based on East Asian painting and philosophy in watercolour and inks. Her follow-up workshop is on the 14th March in Old Alresford.**



Guided by Buddhist philosophies, Christine says there is also a profound truth and reality that can be found through specific ways of working; a discipline and yet, a freedom.

Logic within Western education emphasises learning tasks that

have resolve or closure, but learning to work slowly and methodically defers closure and changes perception. She says that deferring closure is a very inspiring way to draw.

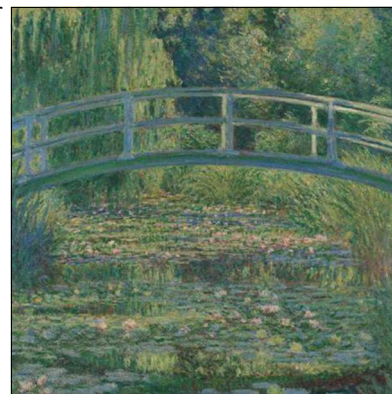
## APRIL AGM & TALK

**Anne Anderson will follow the business of our AGM with an illustrated talk on Monet - 100 Years, on Thursday 23th April, 7.30pm, in Bishops Sutton.**

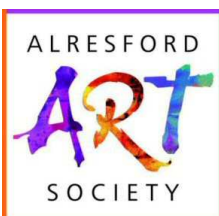
"One of the best talks I've ever been to," declared one member about Anne after her last visit. Anne is an art historian, lecturer, exhibition curator and tour guide. She has published in leading commercial and academic journals; has held several prestigious fellowships including the Huntington Library, CA, and Henry Francis DuPont Winterthur Library and Museum.

It will be 100 years since Monet's death in 2026.

He was a founder of Impressionist painting and is considered to be one of the most prolific and consistent practitioners of the movement's philosophy of expressing perceptions of nature.



*Water Lily Pond, 1899, Claude Monet*



**Don't forget January and February meetings are on a Friday at 2.30pm.**

**email: [art.society@alresford.org](mailto:art.society@alresford.org) [www.artsociety.alresford.org](http://www.artsociety.alresford.org)**

**This newsletter is edited by Sue Gentry, contact 01962 773185 or email [sue.gentry@gentrypublicity.co.uk](mailto:sue.gentry@gentrypublicity.co.uk)**